

# NOARK

Catalog

## DIN Rail Miniature Circuit Breakers

Ex9 Series - B1

Ex9B1H1C16



Ex9B1E3C20



## NOARK Electric

### Electrical Equipment Supplier for Distribution and Control



NOARK Electric is a global supplier of electrical distribution and control products that address a variety of customer needs, ranging from components to intelligent system solutions. Our global product lines include: circuit breakers, contactors, relays and intelligent control. Based in Shanghai, China, NOARK Electric was established in 2007 and covers the globe with regional headquarters in North America and Europe.

Globally, NOARK Electric serves the industrial, commercial, utility and residential markets. In North America, NOARK Electric focuses primarily on industrial OEMs, users and associated channel partners. Our motto is "Excellent Product...Exceptional Value," which NOARK Electric delivers to our customer by maintaining local inventory, providing local sales, customer service and support and manufacturing quality, and aggressively priced products backed by a five-year limited warranty.

#### Quality Product

- Backed by a 5-year limited warranty\*



#### Exceptional Value

- Reduce the cost of products
- Improve profitability
- Increase margins

#### Local Support and Local Inventory

- Superb customer service
- Knowledgeable technical support
- Dedicated sales force
- Well-stocked inventory
- North American headquarters

*\*Limited warranty*

# NOARK Electric

## International Locations in North America, Europe and China



NOARK Electric North America

NOARK Electric Europe



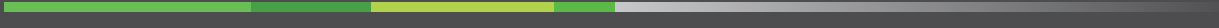
NOARK Electric North America

NOARK Electric Europe

NOARK Electric Shanghai

NOARK Electric Shanghai





# Noark Electric

## Table of Contents

### A UL 489 and UL 489A Miniature Circuit Breakers

Product Overview.....	A3
National and International Standards .....	A4
Product Selection Guide .....	A5
Specifications .....	A6
Products	
B1H (UL 489, 480Y/277 Vac) .....	A7-8
B1N (UL 489, 240 Vac).....	A9-12
B1A (UL 489A, 60 Vdc).....	A13-14
Trip Curves .....	A15-16
Dimensions .....	A17
Accessories.....	A18-20
Accessory Dimensions.....	A21



### B UL 1077 Supplementary Protectors

Product Overview.....	B23
National and International Standards .....	B24
Product Selection Guide .....	B25
Specifications .....	B26
Products	
B1E (UL 1077, 480Y/277 Vac).....	B27-28
Trip Curves .....	B29-30
Dimensions .....	B31
Accessories.....	B32-33
Accessory Dimensions.....	B34



# MINIATURE CIRCUIT BREAKERS



UL 489  
UL 489A

## Miniature Circuit Breakers

### UL 489/489A Product Overview

A

# Features

- Complete range of UL 489 and UL 489A listed miniature circuit breakers up to a 63A current rating
- Breakers mount on standard 35 mm DIN rail
- Standard ratings of 10 kA at 480Y/277 Vac and 10 kA at 125 Vdc
- Suitable for branch circuit device protection
- Trip-free design — breaker cannot be defeated by holding the handle in the ON position
- Captive screws cannot be lost
- For use in applications for which UL 1077 or CSA C22.2 No.235 are also allowed
- Field installable shunt trip and auxiliary switch subsequent mounting
- Available with provisions for ring tongue terminals
- Module width of only 18 mm (per pole)
- Contact position indicator (red/green)
- Possibility for locking the toggle in ON or OFF position

# Typical Application

## Branch Circuit Protection



- Convenience receptacle circuits (internal/external)
- Motor control circuits
- Load circuits leaving the equipment (external)
- HACR equipment: heating, air conditioning, refrigeration (internal/external)
- PLC I/O points
- Power supplies
- Control instrumentation
- Relays
- UPS
- Power conditioners

## Miniature Circuit Breakers

### UL 489/489A National and International Standards

## Certifications

#### UL 489 / CSA C22.2 No.5 / IEC 60947-2

<p>Standard for molded case circuit breakers (MCCB) for feeder and branch circuit protection.</p>	 
<ul style="list-style-type: none"> <li>• Canadian Standards Association (CSA) C22.2 No. 5-02 standard for branch circuit protection.</li> <li>• UL 489A requirements covering single pole DC circuit breakers intended for use as a branch circuit over current and short circuit protection in communications equipment.</li> <li>• UL 486 standard for connection terminals which allows the user to apply field wiring directly to the breaker.</li> <li>• IEC 60947-2 standard for industrial applications of circuit protection.</li> </ul>	

#### RoHS

<ul style="list-style-type: none"> <li>• These devices are RoHS compliant.</li> </ul>	
---	--

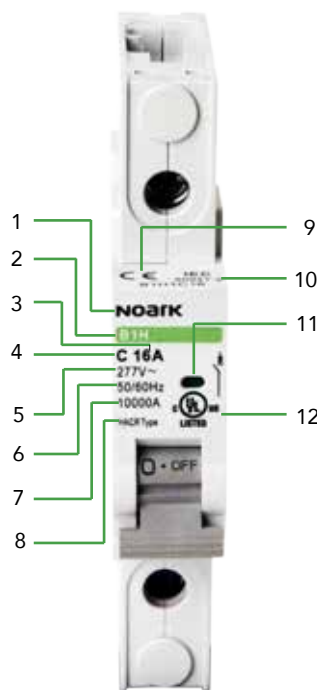
Breakers have UL 486 rated connectors which means the breakers can be wired directly to the load without the need for terminal strips.

# Miniature Circuit Breakers

## UL 489/489A Product Selection Guide

### Label

These branch circuit breakers are available in two terminal configurations: standard box terminals that accept multiple conductors and ring-tongue terminals. All breakers mount on standard 35 mm DIN rail. Bus connectors and feeder terminal facilitate mounting and wiring of multiple miniature circuit breaker arrays in control panel assemblies. Breakers can also be reverse feed.



- 1 Brand
- 2 Product Type
- 3 Rated Current
- 4 Tripping Curve
- 5 Rated Voltage
- 6 Frequency
- 7 Interrupting Rating
- 8 Utility Type
- 9 CE Mark
- 10 IEC Standard
- 11 Breaker Status Indicator
- 12 UL Listed Mark

### Product Selection Guide

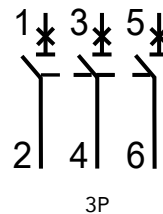
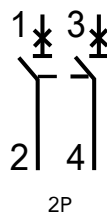
<b>B1</b>	<b>N</b>	<b>1</b>	<b>C</b>	<b>20</b>	<b>R</b>
NOARK Ex9 Series - B1	Standard	Poles	Trip Curves	Rated Current	Terminal Code
	N: 240 Vac/125 Vdc UL 489 Listed	1: 1 Pole	B: 3-5 In	B1H: 0.5-20A	Blank: Box Lugs are Standard
	H: 480Y/277 Vac; UL 489 Listed	2: 2 Pole	C: 5-10 In	B1N: 0.5-63A	R: Ring Tongue Terminal
	A: 60 Vdc (1 Pole Only); UL 489A Listed	3: 3 Pole	D: 10-14 In	B1A: 0.5-63A	

## Miniature Circuit Breakers

### UL 489/489A Specifications

		B1H			B1N			B1A
Conformed Standard		UL 489						UL 489A
Rated Operational Voltage (V)		480Y/277 Vac			240 Vac; 60/125 Vdc			60 Vdc
Rated Frequency (Hz)		50/60 Hz						
Rated Current (A)		0.5~20			0.5~63			0.5~63
Number of Poles		1	2	3	1	2	3	1
Rated Insulation Voltage (V)		500						
Rated Impulse Withstand Voltage (kV)		6						
Instantaneous Tripping Type		B, C, D						
Interrupting (kA)	120 Vac	10	-		10	-		-
	240 Vac		10		10			
	277 Vac		-		-			
	480Y/277 Vac	-	10		-		-	
	60 Vdc	-		10	10		10	
	125 Vdc	-		-	-		-	
Inverse Time-Delay Over-Current Release Type		Thermal-magnetic						
Service Life	Electrical	6000						
	Mechanical	10000						
Protection Degree		IP20						
Wire		14~4 AWG (single wire) 14~6 AWG / 14~10 AWG (two wires)						
Testing Ambient Air Temperature Range		23°F to 104°F (-5°C to +40°C)						
Working Ambient Air Temperature Range		-13°F to 131°F (-25°C to +55°C)						
Insulation Coordination	Rated Insulation Voltage	500 Vac						
	Rated Impulse Withstand Voltage	6 kV						
Pollution Degree		Class 3						
Over Voltage Category / Mounting		Class III / 35 mm DIN rail						
Altitude		Does not exceed 2000m						
Atmospheric Conditions		At +20°C, the relative humidity does not exceed 90% At +40°C, the relative humidity does not exceed 50%						

## Connection Diagram



# Miniature Circuit Breakers

## B1H UL 489 480Y/277 Vac 10 kA



Rated Amperage	1 Pole - 277 Vac		2 Poles - 480Y/277 Vac		3 Poles - 480Y/277 Vac		
	Product	Part Number	Product	Part Number	Product	Part Number	
B Curve (3~5 In)	0.5	B1H1B0.5	1000723	B1H2B0.5	1000765	B1H3B0.5	1000807
	1	B1H1B1	1000724	B1H2B1	1000766	B1H3B1	1000808
	1.6	B1H1B1.6	1000725	B1H2B1.6	1000767	B1H3B1.6	1000809
	2	B1H1B2	1000726	B1H2B2	1000768	B1H3B2	1000810
	3	B1H1B3	1000727	B1H2B3	1000769	B1H3B3	1000811
	4	B1H1B4	1000728	B1H2B4	1000770	B1H3B4	1000812
	5	B1H1B5	1000729	B1H2B5	1000771	B1H3B5	1000813
	6	B1H1B6	1000730	B1H2B6	1000772	B1H3B6	1000814
	8	B1H1B8	1000731	B1H2B8	1000773	B1H3B8	1000815
	10	B1H1B10	1000732	B1H2B10	1000774	B1H3B10	1000816
	13	B1H1B13	1000733	B1H2B13	1000775	B1H3B13	1000817
	15	B1H1B15	1000734	B1H2B15	1000776	B1H3B15	1000818
	16	B1H1B16	1000735	B1H2B16	1000777	B1H3B16	1000819
20	B1H1B20	1000736	B1H2B20	1000778	B1H3B20	1000820	
C Curve (5~10 In)	0.5	B1H1C0.5	1000737	B1H2C0.5	1000779	B1H3C0.5	1000821
	1	B1H1C1	1000738	B1H2C1	1000780	B1H3C1	1000822
	1.6	B1H1C1.6	1000739	B1H2C1.6	1000781	B1H3C1.6	1000823
	2	B1H1C2	1000740	B1H2C2	1000782	B1H3C2	1000824
	3	B1H1C3	1000741	B1H2C3	1000783	B1H3C3	1000825
	4	B1H1C4	1000742	B1H2C4	1000784	B1H3C4	1000826
	5	B1H1C5	1000743	B1H2C5	1000785	B1H3C5	1000827
	6	B1H1C6	1000744	B1H2C6	1000786	B1H3C6	1000828
	8	B1H1C8	1000745	B1H2C8	1000787	B1H3C8	1000829
	10	B1H1C10	1000746	B1H2C10	1000788	B1H3C10	1000830
	13	B1H1C13	1000747	B1H2C13	1000789	B1H3C13	1000831
	15	B1H1C15	1000748	B1H2C15	1000790	B1H3C15	1000832
	16	B1H1C16	1000749	B1H2C16	1000791	B1H3C16	1000833
20	B1H1C20	1000750	B1H2C20	1000792	B1H3C20	1000834	
D Curve (10~14 In)	0.5	B1H1D0.5	1000751	B1H2D0.5	1000793	B1H3D0.5	1000835
	1	B1H1D1	1000752	B1H2D1	1000794	B1H3D1	1000836
	1.6	B1H1D1.6	1000753	B1H2D1.6	1000795	B1H3D1.6	1000837
	2	B1H1D2	1000754	B1H2D2	1000796	B1H3D2	1000838
	3	B1H1D3	1000755	B1H2D3	1000797	B1H3D3	1000839
	4	B1H1D4	1000756	B1H2D4	1000798	B1H3D4	1000840
	5	B1H1D5	1000757	B1H2D5	1000799	B1H3D5	1000841
	6	B1H1D6	1000758	B1H2D6	1000800	B1H3D6	1000842
	8	B1H1D8	1000759	B1H2D8	1000801	B1H3D8	1000843
	10	B1H1D10	1000760	B1H2D10	1000802	B1H3D10	1000844
	13	B1H1D13	1000761	B1H2D13	1000803	B1H3D13	1000845
	15	B1H1D15	1000762	B1H2D15	1000804	B1H3D15	1000846
	16	B1H1D16	1000763	B1H2D16	1000805	B1H3D16	1000847
20	B1H1D20	1000764	B1H2D20	1000806	B1H3D20	1000848	

For accessories, see pages A18-21.

## Miniature Circuit Breakers

### B1HR UL 489 480Y/277 Vac 10 kA - Ring Tongue Terminals



Rated Amperage	1 Pole - 277 Vac		2 Poles - 480Y/277 Vac		3 Poles - 480Y/277 Vac		
	Product	Part Number	Product	Part Number	Product	Part Number	
B Curve (3~5 In)	0.5	B1H1B0.5R	1000849	B1H2B0.5R	1000891	B1H3B0.5R	1000933
	1	B1H1B1R	1000850	B1H2B1R	1000892	B1H3B1R	1000934
	1.6	B1H1B1.6R	1000851	B1H2B1.6R	1000893	B1H3B1.6R	1000935
	2	B1H1B2R	1000852	B1H2B2R	1000894	B1H3B2R	1000936
	3	B1H1B3R	1000853	B1H2B3R	1000895	B1H3B3R	1000937
	4	B1H1B4R	1000854	B1H2B4R	1000896	B1H3B4R	1000938
	5	B1H1B5R	1000855	B1H2B5R	1000897	B1H3B5R	1000939
	6	B1H1B6R	1000856	B1H2B6R	1000898	B1H3B6R	1000940
	8	B1H1B8R	1000857	B1H2B8R	1000899	B1H3B8R	1000941
	10	B1H1B10R	1000858	B1H2B10R	1000900	B1H3B10R	1000942
	13	B1H1B13R	1000859	B1H2B13R	1000901	B1H3B13R	1000943
	15	B1H1B15R	1000860	B1H2B15R	1000902	B1H3B15R	1000944
	16	B1H1B16R	1000861	B1H2B16R	1000903	B1H3B16R	1000945
20	B1H1B20R	1000862	B1H2B20R	1000904	B1H3B20R	1000946	
C Curve (5~10 In)	0.5	B1H1C0.5R	1000863	B1H2C0.5R	1000905	B1H3C0.5R	1000947
	1	B1H1C1R	1000864	B1H2C1R	1000906	B1H3C1R	1000948
	1.6	B1H1C1.6R	1000865	B1H2C1.6R	1000907	B1H3C1.6R	1000949
	2	B1H1C2R	1000866	B1H2C2R	1000908	B1H3C2R	1000950
	3	B1H1C3R	1000867	B1H2C3R	1000909	B1H3C3R	1000951
	4	B1H1C4R	1000868	B1H2C4R	1000910	B1H3C4R	1000952
	5	B1H1C5R	1000869	B1H2C5R	1000911	B1H3C5R	1000953
	6	B1H1C6R	1000870	B1H2C6R	1000912	B1H3C6R	1000954
	8	B1H1C8R	1000871	B1H2C8R	1000913	B1H3C8R	1000955
	10	B1H1C10R	1000872	B1H2C10R	1000914	B1H3C10R	1000956
	13	B1H1C13R	1000873	B1H2C13R	1000915	B1H3C13R	1000957
	15	B1H1C15R	1000874	B1H2C15R	1000916	B1H3C15R	1000958
	16	B1H1C16R	1000875	B1H2C16R	1000917	B1H3C16R	1000959
20	B1H1C20R	1000876	B1H2C20R	1000918	B1H3C20R	1000960	
D Curve (10~14 In)	0.5	B1H1D0.5R	1000877	B1H2D0.5	1000919	B1H3D0.5R	1000961
	1	B1H1D1R	1000878	B1H2D1	1000920	B1H3D1R	1000962
	1.6	B1H1D1.6R	1000879	B1H2D1.6	1000921	B1H3D1.6R	1000963
	2	B1H1D2R	1000880	B1H2D2	1000922	B1H3D2R	1000964
	3	B1H1D3R	1000881	B1H2D3	1000923	B1H3D3R	1000965
	4	B1H1D4R	1000882	B1H2D4	1000924	B1H3D4R	1000966
	5	B1H1D5R	1000883	B1H2D5	1000925	B1H3D5R	1000967
	6	B1H1D6R	1000884	B1H2D6	1000926	B1H3D6R	1000968
	8	B1H1D8R	1000885	B1H2D8	1000927	B1H3D8R	1000969
	10	B1H1D10R	1000886	B1H2D10	1000928	B1H3D10R	1000970
	13	B1H1D13R	1000887	B1H2D13	1000929	B1H3D13R	1000971
	15	B1H1D15R	1000888	B1H2D15	1000930	B1H3D15R	1000972
	16	B1H1D16R	1000889	B1H2D16	1000931	B1H3D16R	1000973
20	B1H1D20R	1000890	B1H2D20	1000932	B1H3D20R	1000974	

For accessories, see pages A18-21.

# Miniature Circuit Breakers

B1N UL 489 240 Vac; 60/125 Vdc 10 kA



Rated Amperage	1 Pole - 240 Vac / 60 Vdc		2 Poles - 240 Vac / 125 Vdc		3 Poles - 240 Vac		
	Product	Part Number	Product	Part Number	Product	Part Number	
B Curve (3~5 In)	0.5	B1N1B0.5	1000000	B1N2B0.5	1000066	B1N3B0.5	1000132
	1	B1N1B1	1000001	B1N2B1	1000067	B1N3B1	1000133
	1.6	B1N1B1.6	1000002	B1N2B1.6	1000068	B1N3B1.6	1000134
	2	B1N1B2	1000003	B1N2B2	1000069	B1N3B2	1000135
	3	B1N1B3	1000004	B1N2B3	1000070	B1N3B3	1000136
	4	B1N1B4	1000005	B1N2B4	1000071	B1N3B4	1000137
	5	B1N1B5	1000006	B1N2B5	1000072	B1N3B5	1000138
	6	B1N1B6	1000007	B1N2B6	1000073	B1N3B6	1000139
	8	B1N1B8	1000008	B1N2B8	1000074	B1N3B8	1000140
	10	B1N1B10	1000009	B1N2B10	1000075	B1N3B10	1000141
	13	B1N1B13	1000010	B1N2B13	1000076	B1N3B13	1000142
	15	B1N1B15	1000011	B1N2B15	1000077	B1N3B15	1000143
	16	B1N1B16	1000012	B1N2B16	1000078	B1N3B16	1000144
	20	B1N1B20	1000013	B1N2B20	1000079	B1N3B20	1000145
	25	B1N1B25	1000014	B1N2B25	1000080	B1N3B25	1000146
	30	B1N1B30	1000015	B1N2B30	1000081	B1N3B30	1000147
	32	B1N1B32	1000016	B1N2B32	1000082	B1N3B32	1000148
	35	B1N1B35	1000017	B1N2B35	1000083	B1N3B35	1000149
	40	B1N1B40	1000018	B1N2B40	1000084	B1N3B40	1000150
50	B1N1B50	1000019	B1N2B50	1000085	B1N3B50	1000151	
60	B1N1B60	1000020	B1N2B60	1000086	B1N3B60	1000152	
63	B1N1B63	1000021	B1N2B63	1000087	B1N3B63	1000153	
C Curve (5~10 In)	0.5	B1N1C0.5	1000022	B1N2C0.5	1000088	B1N3C0.5	1000154
	1	B1N1C1	1000023	B1N2C1	1000089	B1N3C1	1000155
	1.6	B1N1C1.6	1000024	B1N2C1.6	1000090	B1N3C1.6	1000156
	2	B1N1C2	1000025	B1N2C2	1000091	B1N3C2	1000157
	3	B1N1C3	1000026	B1N2C3	1000092	B1N3C3	1000158
	4	B1N1C4	1000027	B1N2C4	1000093	B1N3C4	1000159
	5	B1N1C5	1000028	B1N2C5	1000094	B1N3C5	1000160
	6	B1N1C6	1000029	B1N2C6	1000095	B1N3C6	1000161
	8	B1N1C8	1000030	B1N2C8	1000096	B1N3C8	1000162
	10	B1N1C10	1000031	B1N2C10	1000097	B1N3C10	1000163
	13	B1N1C13	1000032	B1N2C13	1000098	B1N3C13	1000164
	15	B1N1C15	1000033	B1N2C15	1000099	B1N3C15	1000165
	16	B1N1C16	1000034	B1N2C16	1000100	B1N3C16	1000166
	20	B1N1C20	1000035	B1N2C20	1000101	B1N3C20	1000167
	25	B1N1C25	1000036	B1N2C25	1000102	B1N3C25	1000168
	30	B1N1C30	1000037	B1N2C30	1000103	B1N3C30	1000169
	32	B1N1C32	1000038	B1N2C32	1000104	B1N3C32	1000170
	35	B1N1C35	1000039	B1N2C35	1000105	B1N3C35	1000171
	40	B1N1C40	1000040	B1N2C40	1000106	B1N3C40	1000172
50	B1N1C50	1000041	B1N2C50	1000107	B1N3C50	1000173	
60	B1N1C60	1000042	B1N2C60	1000108	B1N3C60	1000174	
63	B1N1C63	1000043	B1N2C63	1000109	B1N3C63	1000175	

## Miniature Circuit Breakers

B1N UL 489 240 Vac; 60/125 Vdc 10 kA



Rated Amperage	1 Pole - 240 Vac / 60 Vdc		2 Poles - 240 Vac / 125 Vdc		3 Poles - 240 Vac		
	Product	Part Number	Product	Part Number	Product	Part Number	
D Curve (10-14 In)	0.5	B1N1D0.5	1000044	B1N2D0.5	1000110	B1N3D0.5	1000176
	1	B1N1D1	1000045	B1N2D1	1000111	B1N3D1	1000177
	1.6	B1N1D1.6	1000046	B1N2D1.6	1000112	B1N3D1.6	1000178
	2	B1N1D2	1000047	B1N2D2	1000113	B1N3D2	1000179
	3	B1N1D3	1000048	B1N2D3	1000114	B1N3D3	1000180
	4	B1N1D4	1000049	B1N2D4	1000115	B1N3D4	1000181
	5	B1N1D5	1000050	B1N2D5	1000116	B1N3D5	1000182
	6	B1N1D6	1000051	B1N2D6	1000117	B1N3D6	1000183
	8	B1N1D8	1000052	B1N2D8	1000118	B1N3D8	1000184
	10	B1N1D10	1000053	B1N2D10	1000119	B1N3D10	1000185
	13	B1N1D13	1000054	B1N2D13	1000120	B1N3D13	1000186
	15	B1N1D15	1000055	B1N2D15	1000121	B1N3D15	1000187
	16	B1N1D16	1000056	B1N2D16	1000122	B1N3D16	1000188
	20	B1N1D20	1000057	B1N2D20	1000123	B1N3D20	1000189
	25	B1N1D25	1000058	B1N2D25	1000124	B1N3D25	1000190
	30	B1N1D30	1000059	B1N2D30	1000125	B1N3D30	1000191
32	B1N1D32	1000060	B1N2D32	1000126	B1N3D32	1000192	
35	B1N1D35	1000061	B1N2D35	1000127	B1N3D35	1000193	
40	B1N1D40	1000062	B1N2D40	1000128	B1N3D40	1000194	
50	B1N1D50	1000063	B1N2D50	1000129	B1N3D50	1000195	
60	B1N1D60	1000064	B1N2D60	1000130	B1N3D60	1000196	
63	B1N1D63	1000065	B1N2D63	1000131	B1N3D63	1000197	

For accessories, see pages A18-21.

# Miniature Circuit Breakers

## B1NR UL 489 240 Vac; 60/125 Vdc 10 kA - Ring Tongue Terminals

A

**Certifications**  
IEC/EN 60947-2  





Rated Amperage	1 Pole - 240 Vac / 60 Vdc		2 Poles - 240 Vac / 125 Vdc		3 Poles - 240 Vac		
	Product	Part Number	Product	Part Number	Product	Part Number	
<b>B Curve (3~5 In)</b>	0.5	B1N1B0.5R	1000198	B1N2B0.5R	1000255	B1N3B0.5R	1000312
	1	B1N1B1R	1000199	B1N2B1R	1000256	B1N3B1R	1000313
	1.6	B1N1B1.6R	1000200	B1N2B1.6R	1000257	B1N3B1.6R	1000314
	2	B1N1B2R	1000201	B1N2B2R	1000258	B1N3B2R	1000315
	3	B1N1B3R	1000202	B1N2B3R	1000259	B1N3B3R	1000316
	4	B1N1B4R	1000203	B1N2B4R	1000260	B1N3B4R	1000317
	5	B1N1B5R	1000204	B1N2B5R	1000261	B1N3B5R	1000318
	6	B1N1B6R	1000205	B1N2B6R	1000262	B1N3B6R	1000319
	8	B1N1B8R	1000206	B1N2B8R	1000263	B1N3B8R	1000320
	10	B1N1B10R	1000207	B1N2B10R	1000264	B1N3B10R	1000321
	13	B1N1B13R	1000208	B1N2B13R	1000265	B1N3B13R	1000322
	15	B1N1B15R	1000209	B1N2B15R	1000266	B1N3B15R	1000323
	16	B1N1B16R	1000210	B1N2B16R	1000267	B1N3B16R	1000324
	20	B1N1B20R	1000211	B1N2B20R	1000268	B1N3B20R	1000325
	25	B1N1B25R	1000212	B1N2B25R	1000269	B1N3B25R	1000326
	30	B1N1B30R	1000213	B1N2B30R	1000270	B1N3B30R	1000327
32	B1N1B32R	1000214	B1N2B32R	1000271	B1N3B32R	1000328	
35	B1N1B35R	1000215	B1N2B35R	1000272	B1N3B35R	1000329	
40	B1N1B40R	1000216	B1N2B40R	1000273	B1N3B40R	1000330	
<b>C Curve (5~10 In)</b>	0.5	B1N1C0.5R	1000217	B1N2C0.5R	1000274	B1N3C0.5R	1000331
	1	B1N1C1R	1000218	B1N2C1R	1000275	B1N3C1R	1000332
	1.6	B1N1C1.6R	1000219	B1N2C1.6R	1000276	B1N3C1.6R	1000333
	2	B1N1C2R	1000220	B1N2C2R	1000277	B1N3C2R	1000334
	3	B1N1C3R	1000221	B1N2C3R	1000278	B1N3C3R	1000335
	4	B1N1C4R	1000222	B1N2C4R	1000279	B1N3C4R	1000336
	5	B1N1C5R	1000223	B1N2C5R	1000280	B1N3C5R	1000337
	6	B1N1C6R	1000224	B1N2C6R	1000281	B1N3C6R	1000338
	8	B1N1C8R	1000225	B1N2C8R	1000282	B1N3C8R	1000339
	10	B1N1C10R	1000226	B1N2C10R	1000283	B1N3C10R	1000340
	13	B1N1C13R	1000227	B1N2C13R	1000284	B1N3C13R	1000341
	15	B1N1C15R	1000228	B1N2C15R	1000285	B1N3C15R	1000342
	16	B1N1C16R	1000229	B1N2C16R	1000286	B1N3C16R	1000343
	20	B1N1C20R	1000230	B1N2C20R	1000287	B1N3C20R	1000344
	25	B1N1C25R	1000231	B1N2C25R	1000288	B1N3C25R	1000345
	30	B1N1C30R	1000232	B1N2C30R	1000289	B1N3C30R	1000346
32	B1N1C32R	1000233	B1N2C32R	1000290	B1N3C32R	1000347	
35	B1N1C35R	1000234	B1N2C35R	1000291	B1N3C35R	1000348	
40	B1N1C40R	1000235	B1N2C40R	1000292	B1N3C40R	1000349	

For accessories, see pages A18-21.

## Miniature Circuit Breakers

### B1NR UL 489 240 Vac; 60/125 Vdc 10 kA - Ring Tongue Terminals



Rated Amperage	1 Pole - 240 Vac / 60 Vdc		2 Poles - 240 Vac / 125 Vdc		3 Poles - 240 Vac		
	Product	Part Number	Product	Part Number	Product	Part Number	
D Curve (10-14 In)	0.5	B1N1D0.5R	1000236	B1N2D0.5R	1000293	B1N3D0.5R	1000350
	1	B1N1D1R	1000237	B1N2D1R	1000294	B1N3D1R	1000351
	1.6	B1N1D1.6R	1000238	B1N2D1.6R	1000295	B1N3D1.6R	1000352
	2	B1N1D2R	1000239	B1N2D2R	1000296	B1N3D2R	1000353
	3	B1N1D3R	1000240	B1N2D3R	1000297	B1N3D3R	1000354
	4	B1N1D4R	1000241	B1N2D4R	1000298	B1N3D4R	1000355
	5	B1N1D5R	1000242	B1N2D5R	1000299	B1N3D5R	1000356
	6	B1N1D6R	1000243	B1N2D6R	1000300	B1N3D6R	1000357
	8	B1N1D8R	1000244	B1N2D8R	1000301	B1N3D8R	1000358
	10	B1N1D10R	1000245	B1N2D10R	1000302	B1N3D10R	1000359
	13	B1N1D13R	1000246	B1N2D13R	1000303	B1N3D13R	1000360
	15	B1N1D15R	1000247	B1N2D15R	1000304	B1N3D15R	1000361
	16	B1N1D16R	1000248	B1N2D16R	1000305	B1N3D16R	1000362
	20	B1N1D20R	1000249	B1N2D20R	1000306	B1N3D20R	1000363
	25	B1N1D25R	1000250	B1N2D25R	1000307	B1N3D25R	1000364
	30	B1N1D30R	1000251	B1N2D30R	1000308	B1N3D30R	1000365
32	B1N1D32R	1000252	B1N2D32R	1000309	B1N3D32R	1000366	
35	B1N1D35R	1000253	B1N2D35R	1000310	B1N3D35R	1000367	
40	B1N1D40R	1000254	B1N2D40R	1000311	B1N3D40R	1000368	

For accessories, see pages A18-21.

# Miniature Circuit Breakers

## B1A UL 489A 60 Vdc 10 kA

**Certifications**  
IEC/EN 60947-2





Rated Amperage	1 Pole		1 Pole		1 Pole	
	Product	Part Number	Product	Part Number	Product	Part Number
0.5	B1A1B0.5	1001026	B1A1C0.5	1001048	B1A1D0.5	1001070
1	B1A1B1	1001027	B1A1C1	1001049	B1A1D1	1001071
1.6	B1A1B1.6	1001028	B1A1C1.6	1001050	B1A1D1.6	1001072
2	B1A1B2	1001029	B1A1C2	1001051	B1A1D2	1001073
3	B1A1B3	1001030	B1A1C3	1001052	B1A1D3	1001074
4	B1A1B4	1001031	B1A1C4	1001053	B1A1D4	1001075
5	B1A1B5	1001032	B1A1C5	1001054	B1A1D5	1001076
6	B1A1B6	1001033	B1A1C6	1001055	B1A1D6	1001077
8	B1A1B8	1001034	B1A1C8	1001056	B1A1D8	1001078
10	B1A1B10	1001035	B1A1C10	1001057	B1A1D10	1001079
13	B1A1B13	1001036	B1A1C13	1001058	B1A1D13	1001080
15	B1A1B15	1001037	B1A1C15	1001059	B1A1D15	1001081
16	B1A1B16	1001038	B1A1C16	1001060	B1A1D16	1001082
20	B1A1B20	1001039	B1A1C20	1001061	B1A1D20	1001083
25	B1A1B25	1001040	B1A1C25	1001062	B1A1D25	1001084
30	B1A1B30	1001041	B1A1C30	1001063	B1A1D30	1001085
32	B1A1B32	1001042	B1A1C32	1001064	B1A1D32	1001086
35	B1A1B35	1001043	B1A1C35	1001065	B1A1D35	1001087
40	B1A1B40	1001044	B1A1C40	1001066	B1A1D40	1001088
50	B1A1B50	1001045	B1A1C50	1001067	B1A1D50	1001089
60	B1A1B60	1001046	B1A1C60	1001068	B1A1D60	1001090
63	B1A1B63	1001047	B1A1C63	1001069	B1A1D63	1001091

B Curve (3~5 In)

C Curve (5~10 In)

D Curve (10-14 In)

For accessories, see pages A18-21.

## Miniature Circuit Breakers

### B1A UL 489A 60 Vdc 10 kA - Ring Tongue Terminals



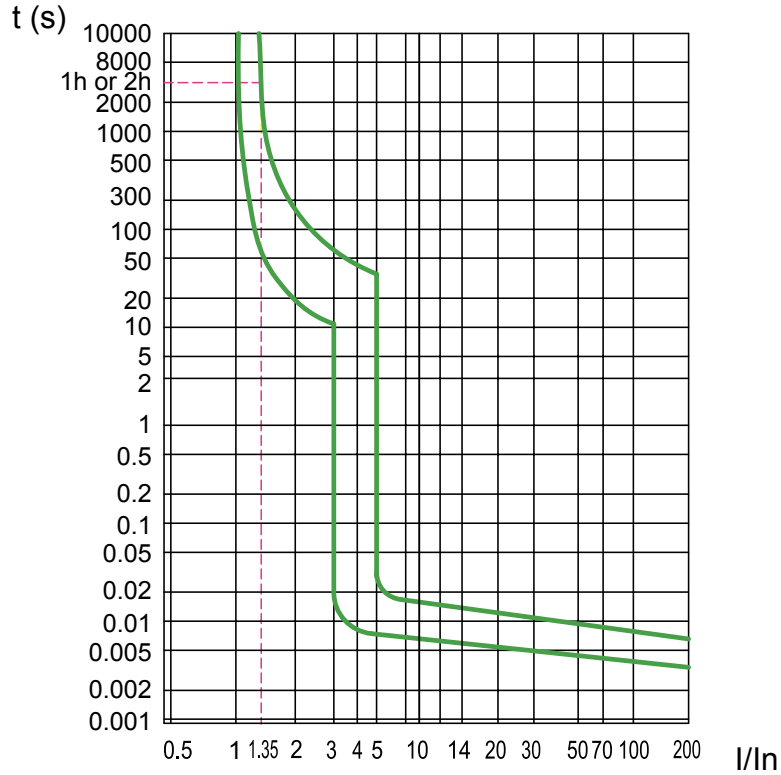
Rated Amperage	1 Pole			1 Pole			1 Pole	
	Product	Part Number		Product	Part Number		Product	Part Number
0.5	B1A1B0.5R	1001092	B Curve (3~5 In)	B1A1C0.5R	1001111	C Curve (5~10 In)	B1A1D0.5R	1001130
1	B1A1B1R	1001093		B1A1C1R	1001112		B1A1D1R	1001131
1.6	B1A1B1.6R	1001094		B1A1C1.6R	1001113		B1A1D1.6R	1001132
2	B1A1B2R	1001095		B1A1C2R	1001114		B1A1D2R	1001133
3	B1A1B3R	1001096		B1A1C3R	1001115		B1A1D3R	1001134
4	B1A1B4R	1001097		B1A1C4R	1001116		B1A1D4R	1001135
5	B1A1B5R	1001098		B1A1C5R	1001117		B1A1D5R	1001136
6	B1A1B6R	1001099		B1A1C6R	1001118		B1A1D6R	1001137
8	B1A1B8R	1001100		B1A1C8R	1001119		B1A1D8R	1001138
10	B1A1B10R	1001101		B1A1C10R	1001120		B1A1D10R	1001139
13	B1A1B13R	1001102		B1A1C13R	1001121		B1A1D13R	1001140
15	B1A1B15R	1001103		B1A1C15R	1001122		B1A1D15R	1001141
16	B1A1B16R	1001104		B1A1C16R	1001123		B1A1D16R	1001142
20	B1A1B20R	1001105		B1A1C20R	1001124		B1A1D20R	1001143
25	B1A1B25R	1001106		B1A1C25R	1001125		B1A1D25R	1001144
30	B1A1B30R	1001107		B1A1C30R	1001126		B1A1D30R	1001145
32	B1A1B32R	1001108	B1A1C32R	1001127	B1A1D32R	1001146		
35	B1A1B35R	1001109	B1A1C35R	1001128	B1A1D35R	1001147		
40	B1A1B40R	1001110	B1A1C40R	1001129	B1A1D40R	1001148		

For accessories, see pages A18-21.

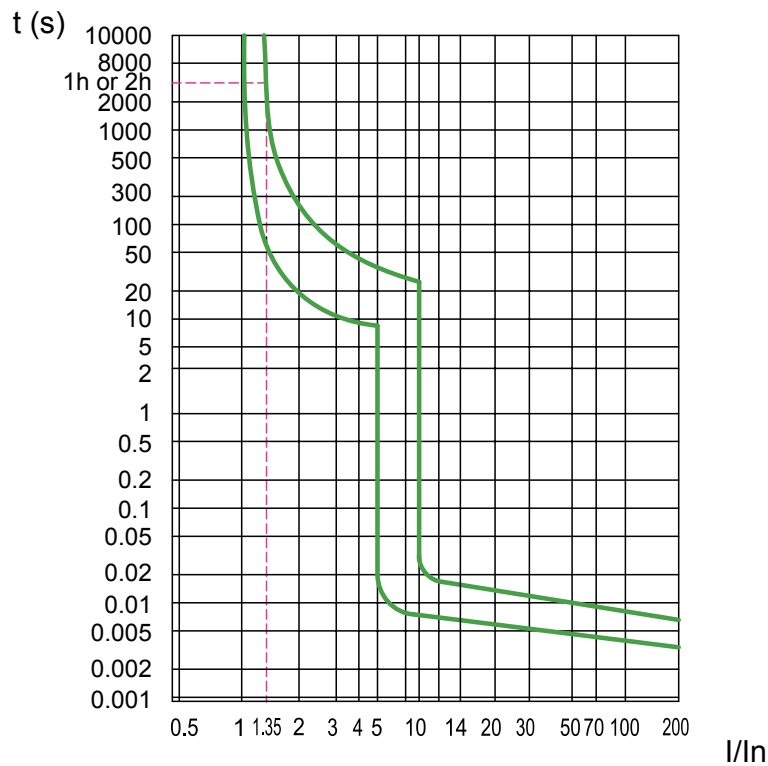
# Miniature Circuit Breakers

## UL 489/489A Trip Curves

**B Curve**  
(3~5 In)



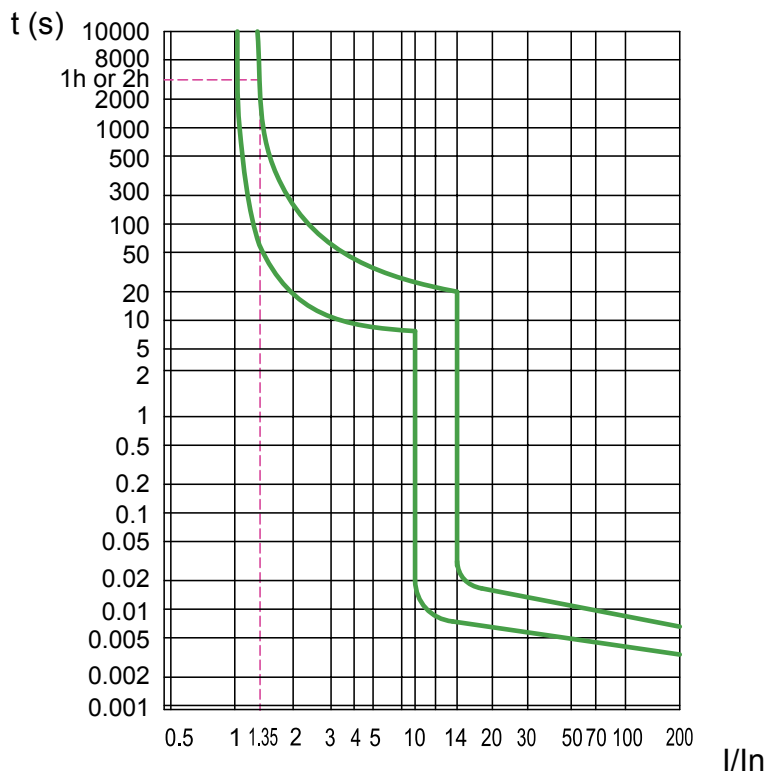
**C Curve**  
(5~10 In)



## Miniature Circuit Breakers

### UL 489/489A Trip Curves

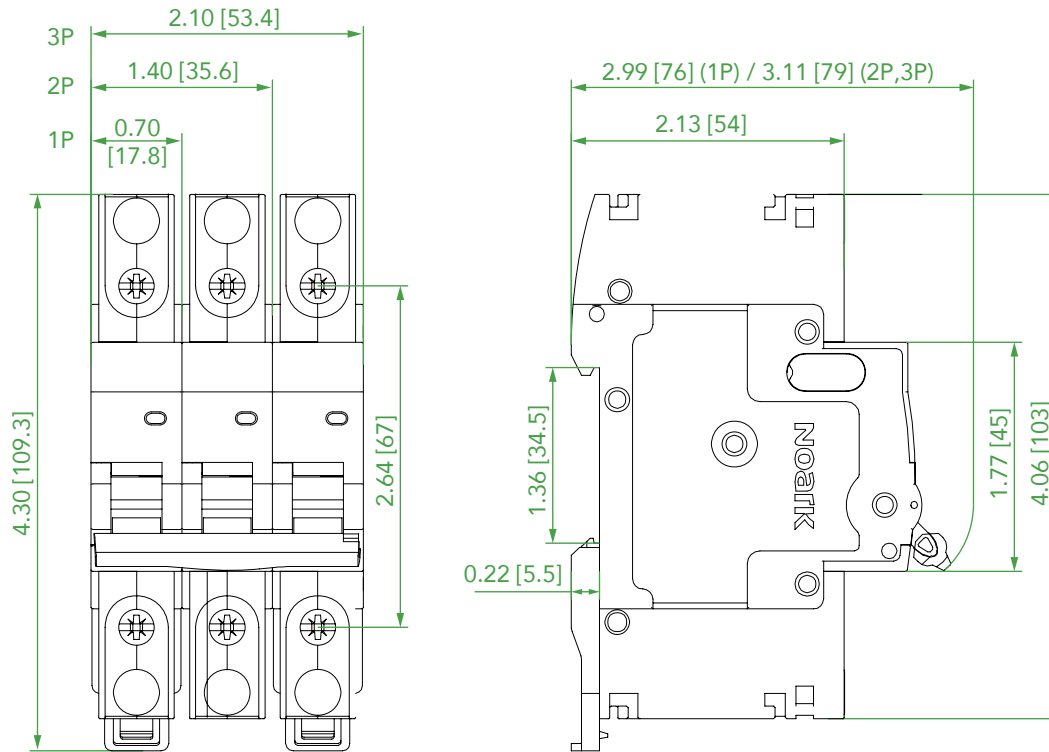
**D Curve**  
(10~14 In)



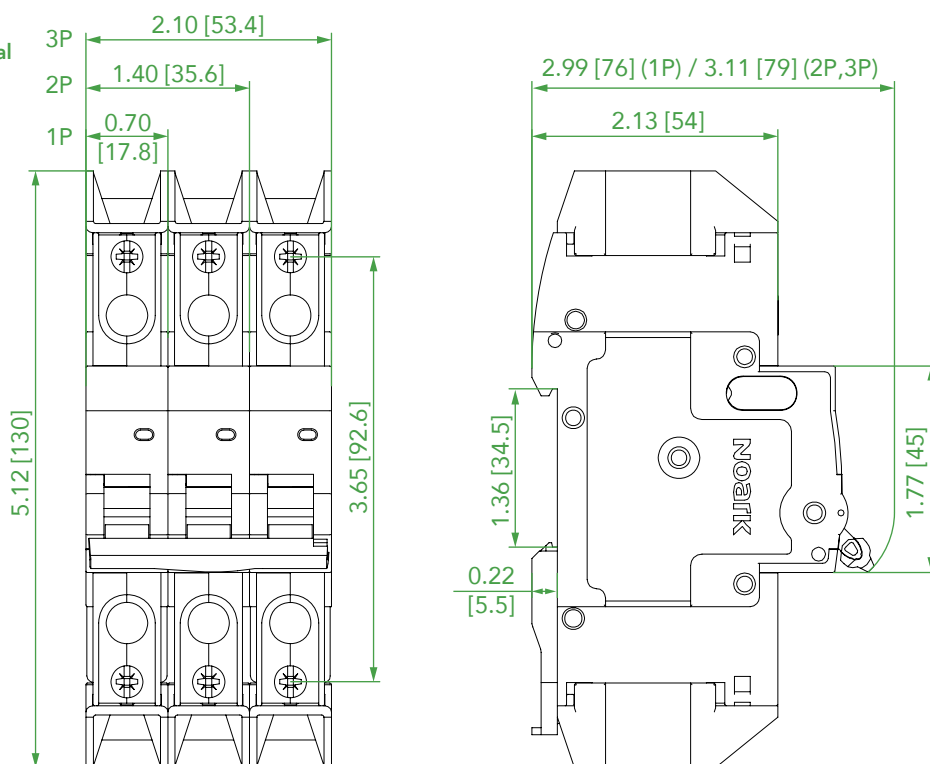
# Miniature Circuit Breakers

## UL 489/489A Dimensions

**B1H/N/A**  
 1P/2P/3P  
 Unit: in. [mm]



**B1H/N/A**  
 with Ring Tongue Terminal  
 1P/2P/3P  
 Unit: in. [mm]

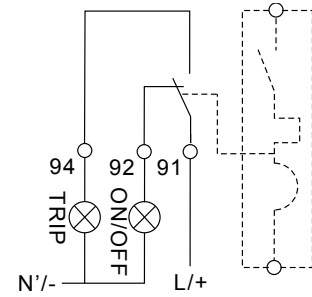


## Miniature Circuit Breakers

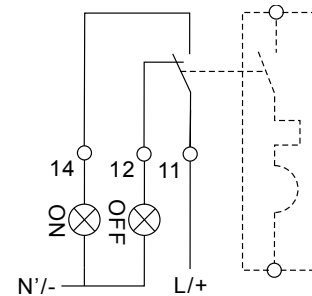
### UL 489/489A Accessories: Alarm Switch, Aux Contact, RTT



<b>AL31</b>	<b>11</b>	<b>N</b>
<b>Description</b>	<b>Auxiliary Contact</b>	<b>Device Category</b>
Alarm Switch	11: 1NO+1NC	N: UL 489 and UL 489A
<b>Accessory Description</b>	<b>Product</b>	<b>Part Number</b>
Alarm Switch	AL3111N	1001201



<b>AX31</b>	<b>11</b>	<b>N</b>
<b>Description</b>	<b>Auxiliary Contact</b>	<b>Device Category</b>
Auxiliary Contact	11: 1NO+1NC	N: UL 489 and UL 489A
<b>Accessory Description</b>	<b>Product</b>	<b>Part Number</b>
Auxiliary Contact	AX3111N	1001200



<b>RTT31</b>	<b>N</b>	
<b>Description</b>	<b>Device Category</b>	
Ring Tongue Terminal	N: UL 489 and UL 489A	
<b>Accessory Description</b>	<b>Product</b>	<b>Part Number</b>
RTT Kit	RTT31N	1001214

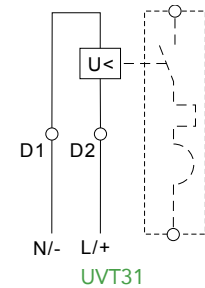
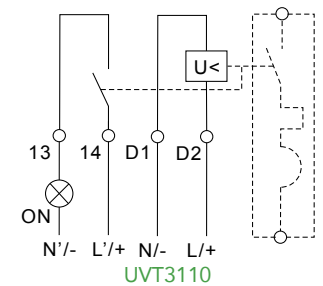
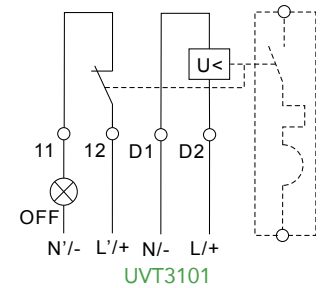
# Miniature Circuit Breakers

## UL 489/489A Accessories: Under-Voltage and Shunt Trip



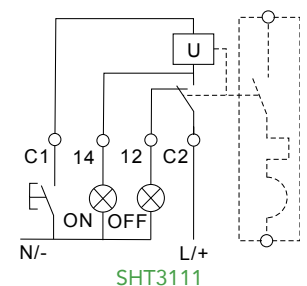
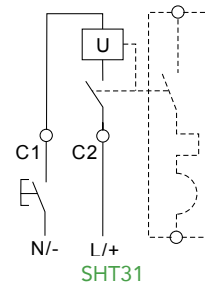
<b>UVT31</b>	<b>01</b>	<b>N</b>	<b>A</b>
<b>Description</b>	<b>Auxiliary Contact</b>	<b>Device Category</b>	<b>Rated Voltage</b>
Under-Voltage Trip	01: 1NC	N: UL 489 and UL 489A	A: 240 Vac
	10: 1NO		B: 48 Vac/dc
	Blank: No Auxiliary Contact		

Accessory Description	Product	Part Number
Under-Voltage Trip	1NC / 240Vac	UVT3101NA 1001202
	1NC / 48Vac/dc	UVT3101NB 1001203
	1NO / 240Vac	UVT3110NA 1001204
	1NO / 48Vac/dc	UVT3110NB 1001205
	240Vac	UVT31NA 1001206
	48Vac/dc	UVT31NB 1001207



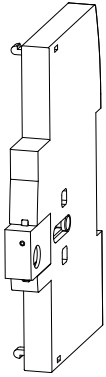
<b>SHT31</b>	<b>11</b>	<b>N</b>	<b>A</b>
<b>Description</b>	<b>Auxiliary Contact</b>	<b>Device Category</b>	<b>Rated Voltage</b>
Shunt Trip	11: 1NO+1NC	N: UL 489 and UL 489A	A: 110-415 Vac, 110-130 Vdc
	Blank: No Auxiliary Contact		B: 48 Vac/dc
			C: 12-24 Vac/dc

Accessory Description	Product	Part Number
Shunt Trip	1NO+1NC 110-415 Vac/110-130 Vdc	SHT3111NA 1001208
	1NO+1NC 48-60 Vac/dc	SHT3111NB 1001209
	1NO+1NC 12-24 Vac/dc	SHT3111NC 1001210
	110-415 Vac/110-130 Vdc	SHT31NA 1001211
	48-60 Vac/dc	SHT31NB 1001212
	12-24 Vac/dc	SHT31NC 1001213



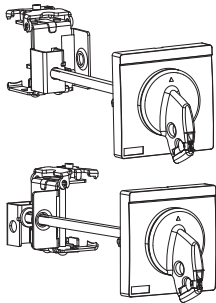
## Miniature Circuit Breakers

### UL 489/489A Accessories: Padlock, Extend Rotary Handle



<b>KLK31</b>	<b>N</b>
<b>Description</b>	<b>Device Category</b>
Padlock	N: UL 489 and UL 489A

Accessory Description	Product	Part Number
Padlock Lock Off	KLK31N	1001230



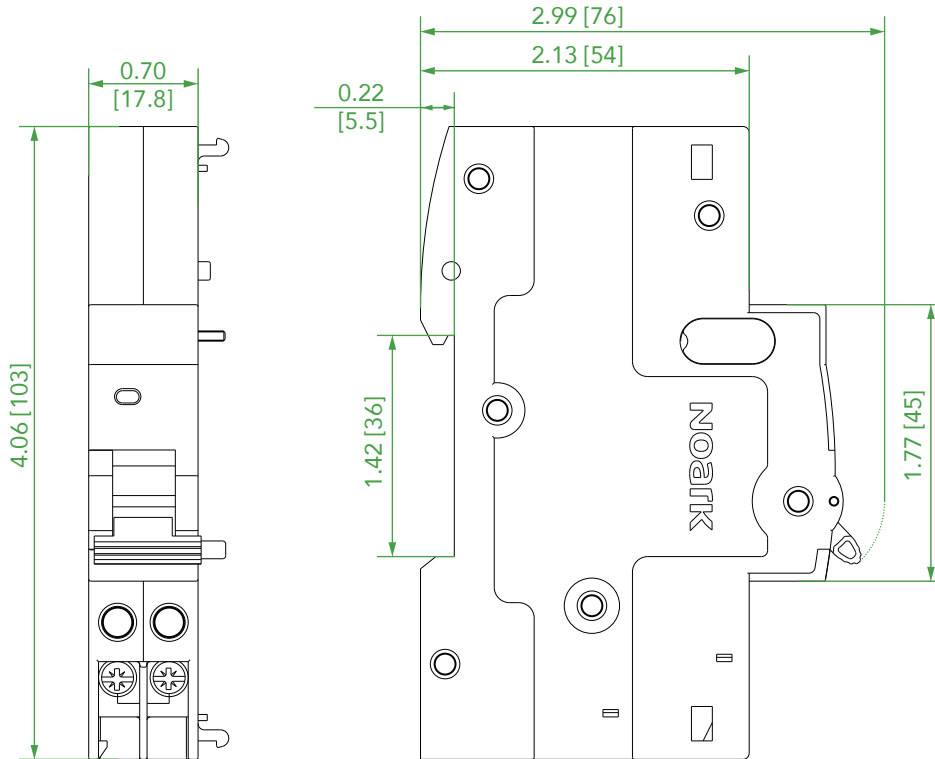
<b>ERH</b>	<b>31</b>	<b>N</b>	<b>L</b>	<b>1</b>
<b>Description</b>	<b>Shaft Length</b>	<b>Device Category</b>	<b>Position</b>	<b>Color</b>
Extended Rotary Handle	31: 6" (160 mm)	N: UL 489 and UL 489A	L: Vertical, Front Mount	1: Grey/Green
	32: 10" (240 mm)		S: Horizontal, Side Mount	2: Red/Yellow
			LD: Vertical, Front Mount with Door Interlock	
			SD: Horizontal, Side Mount with Door Interlock	

Accessory Description			Product	Part Number	Product	Part Number
			6" Shaft		10" Shaft	
Extended Rotary Handle	Vertical Front Mount	Grey/Green	ERH31NL1	1001231	ERH32NL1	1001239
		Red/Yellow	ERH31NL2	1001232	ERH32NL2	1001240
	Horizontal Side Mount	Grey/Green	ERH31NS1	1001233	ERH32NS1	1001241
		Red/Yellow	ERH31NS2	1001234	ERH32NS2	1001242
	Vertical Front Mount with Door Interlock	Grey/Green	ERH31NLD1	1001235	ERH32NLD1	1001243
		Red/Yellow	ERH31NLD2	1001236	ERH32NLD2	1001244
	Horizontal Side Mount with Door Interlock	Grey/Green	ERH31NSD1	1001237	ERH32NSD1	1001245
		Red/Yellow	ERH31NSD2	1001238	ERH32NSD2	1001246

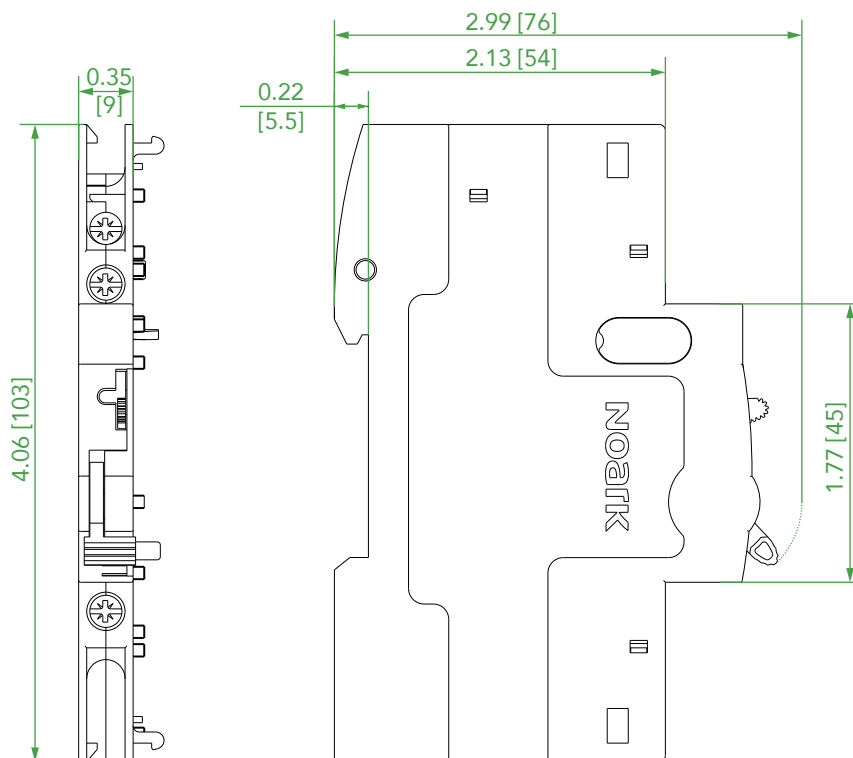
# Miniature Circuit Breakers

## UL 489/489A Accessory Dimensions

UVT31V  
 UVT2101N  
 UVT3110N  
 SHT31N  
 SHT3111N  
 Unit: in. [mm]



AL3111N  
 AX3111N  
 Unit: in. [mm]



# SUPPLEMENTARY PROTECTORS



# UL 1077

# Features

- Complete range of UL 1077 listed miniature circuit breakers up to a 63A current rating
- Breakers mount on standard 35 mm DIN rail
- Standard ratings of 5 kA at 480Y/277 Vac
- Suitable for supplementary protection
- Thermal-magnetic over current protection – Three levels of short-circuit protection, categorized by B, C and D curves
- Trip-free design – breaker cannot be defeated by holding the handle in the ON position
- Captive screws cannot be lost
- Fulfill UL 1077, IEC 60947-2 Standard
- Field-installable shunt trip and auxiliary switch subsequent mounting
- Module width of only 18 mm (per pole)
- Contact position indicator (red/green)
- Possibility for locking the toggle in ON or OFF position

# Typical Application

## Supplementary Protection

- Control circuits
- Lighting
- Business equipment
- Appliances

## Supplementary Protectors

### UL 1077 National and International Standards

## Certifications

#### UL 1077 / CSA C22.2 No.235 / IEC 60947-2

- Supplementary Protectors are UL Recognized for use in the United States in accordance with NFPA® 70 (NEC).
- The devices comply with UL 1077 and CSA 22.2 No. 235, meeting the requirements for supplementary protectors.
- These devices are for international and domestic use, and also comply with IEC 60947-2 and are CE marked.



#### RoHS

- These devices are RoHS compliant.



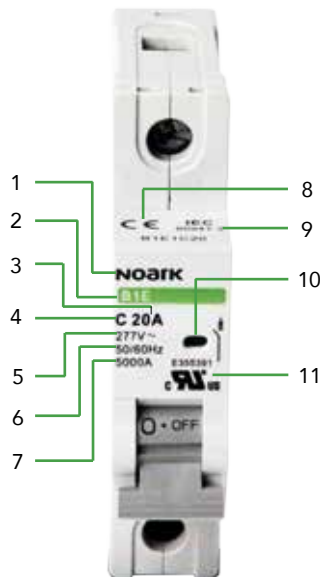
# Supplementary Protectors

## UL 1077 Product Selection Guide

### Label

B

These branch circuit breakers are available in two terminal configurations: standard box terminals that accept multiple conductors and ring-tongue terminals. All breakers mount on standard 35 mm DIN rail. Bus connectors and feeder terminal facilitate mounting and wiring of multiple miniature circuit breaker arrays in control panel assemblies. Breakers can also be reverse feed.



- 1 Brand
- 2 Product Type
- 3 Rated Current
- 4 Tripping Curve
- 5 Rated Voltage
- 6 Frequency
- 7 Interrupting Rating
- 8 CE Mark
- 9 IEC Standard
- 10 Breaker Status Indicator
- 11 UL Recognized Component

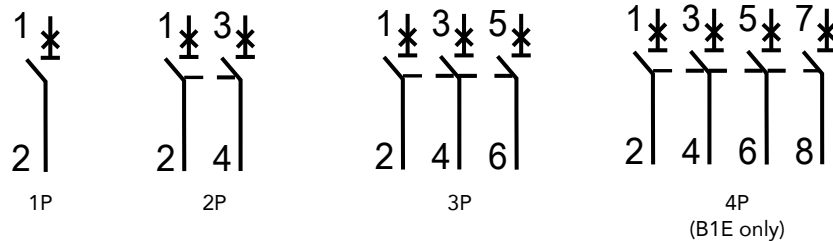
### Product Selection Guide

<div style="background-color: #4CAF50; color: white; padding: 2px 5px; margin-bottom: 5px;">B1E</div> <div style="background-color: #4CAF50; color: white; padding: 2px 5px; margin-bottom: 5px;">↓</div> <div style="background-color: #4CAF50; color: white; padding: 5px;">NOARK Ex9 Series - B1E</div>	<div style="background-color: #4CAF50; color: white; padding: 2px 5px; margin-bottom: 5px;">1</div> <div style="background-color: #4CAF50; color: white; padding: 2px 5px; margin-bottom: 5px;">↓</div> <div style="background-color: #4CAF50; color: white; padding: 5px;">Number of Poles</div> <div style="background-color: #e8f5e9; padding: 5px; margin-top: 5px;">1: 1 Pole</div> <div style="background-color: #e8f5e9; padding: 5px; margin-top: 5px;">2: 2 Pole</div> <div style="background-color: #e8f5e9; padding: 5px; margin-top: 5px;">3: 3 Pole</div> <div style="background-color: #e8f5e9; padding: 5px; margin-top: 5px;">4: 4 Pole</div>	<div style="background-color: #4CAF50; color: white; padding: 2px 5px; margin-bottom: 5px;">C</div> <div style="background-color: #4CAF50; color: white; padding: 2px 5px; margin-bottom: 5px;">↓</div> <div style="background-color: #4CAF50; color: white; padding: 5px;">Trip Curves</div> <div style="background-color: #e8f5e9; padding: 5px; margin-top: 5px;">B: 3-5 In</div> <div style="background-color: #e8f5e9; padding: 5px; margin-top: 5px;">C: 5-10 In</div> <div style="background-color: #e8f5e9; padding: 5px; margin-top: 5px;">D: 10-14 In</div>	<div style="background-color: #4CAF50; color: white; padding: 2px 5px; margin-bottom: 5px;">63</div> <div style="background-color: #4CAF50; color: white; padding: 2px 5px; margin-bottom: 5px;">↓</div> <div style="background-color: #4CAF50; color: white; padding: 5px;">Rated Current</div> <div style="background-color: #e8f5e9; padding: 5px; margin-top: 5px;"> <table border="0" style="width: 100%;"> <tr> <td>1: 1A</td> <td>15: 15A</td> </tr> <tr> <td>1.6: 1.6A</td> <td>16: 16A</td> </tr> <tr> <td>2: 2A</td> <td>20: 20A</td> </tr> <tr> <td>3: 3A</td> <td>25: 25A</td> </tr> <tr> <td>4: 4A</td> <td>30: 30A</td> </tr> <tr> <td>5: 5A</td> <td>32: 32A</td> </tr> <tr> <td>6: 6A</td> <td>40: 40A</td> </tr> <tr> <td>8: 8A</td> <td>50: 50A</td> </tr> <tr> <td>10: 10A</td> <td>60: 60A</td> </tr> <tr> <td>13: 13A</td> <td>63: 63A</td> </tr> </table> </div>	1: 1A	15: 15A	1.6: 1.6A	16: 16A	2: 2A	20: 20A	3: 3A	25: 25A	4: 4A	30: 30A	5: 5A	32: 32A	6: 6A	40: 40A	8: 8A	50: 50A	10: 10A	60: 60A	13: 13A	63: 63A
1: 1A	15: 15A																						
1.6: 1.6A	16: 16A																						
2: 2A	20: 20A																						
3: 3A	25: 25A																						
4: 4A	30: 30A																						
5: 5A	32: 32A																						
6: 6A	40: 40A																						
8: 8A	50: 50A																						
10: 10A	60: 60A																						
13: 13A	63: 63A																						

## Supplementary Protectors UL 1077 Specifications

		B1E			
Conformed Standard		UL 1077			
Rated Operational Voltage (V)		480Y/277 Vac 125 Vdc			
Rated Frequency (Hz)		50/60 Hz			
Rated Current (A)		1-63			
Number of Poles		1	2	3	4
Rated Insulation Voltage (V)		500			
Rated Impulse Withstand Voltage (kV)		6			
Instantaneous Tripping Type		B, C, D			
Interrupting (kA)	120 Vac	10	-		
	240 Vac	10			
	277 Vac	5	-		
	480Y/277 Vac	-	5		
	60 Vdc	10		-	
	125 Vdc	-	10	-	
Inverse Time-Delay Over-Current Release Type		Thermal-Magnetic			
Service Life	Electrical	6000			
	Mechanical	10000			
Protection Degree		IP20			
Wire		14-4 AWG			
Testing Ambient Air Temperature Range		23°F to 104°F (-5°C to +40°C)			
Working Ambient Air Temperature Range		-13°F to 131°F (-25°C to +55°C)			
Insulation Coordination	Rated Insulation Voltage	500 Vac			
	Rated Impulse Withstand Voltage	6 kV			
Pollution Degree		Class 3			
Over Voltage Category / Mounting		Class III / 35 mm DIN rail			
Altitude		Does not exceed 2000m			
Atmospheric Conditions		At +20°C, the relative humidity does not exceed 90% At +40°C, the relative humidity does not exceed 50%			

## Connection Diagram



# Supplementary Protectors

## B1E UL 1077 480Y/277 Vac 5 kA

**Certifications**  
IEC/EN 60947-2  
**CE** **c** **UL** **us**



**B**

Rated Amperage	1 Pole - 277V		2 Poles - 480V		3 Poles - 480V		4 Poles - 480V		
	Product	Part Number	Product	Part Number	Product	Part Number	Product	Part Number	
<b>B Curve (3~5In)</b>	1	B1E1B1	1000420	B1E2B1	1000483	B1E3B1	1000546	B1E4B1	1000609
	1.6	B1E1B1.6	1000421	B1E2B1.6	1000484	B1E3B1.6	1000547	B1E4B1.6	1000610
	2	B1E1B2	1000422	B1E2B2	1000485	B1E3B2	1000548	B1E4B2	1000611
	3	B1E1B3	1000423	B1E2B3	1000486	B1E3B3	1000549	B1E4B3	1000612
	4	B1E1B4	1000424	B1E2B4	1000487	B1E3B4	1000550	B1E4B4	1000613
	5	B1E1B5	1000425	B1E2B5	1000488	B1E3B5	1000551	B1E4B5	1000614
	6	B1E1B6	1000426	B1E2B6	1000489	B1E3B6	1000552	B1E4B6	1000615
	8	B1E1B8	1000427	B1E2B8	1000490	B1E3B8	1000553	B1E4B8	1000616
	10	B1E1B10	1000428	B1E2B10	1000491	B1E3B10	1000554	B1E4B10	1000617
	13	B1E1B13	1000429	B1E2B13	1000492	B1E3B13	1000555	B1E4B13	1000618
	15	B1E1B15	1000430	B1E2B15	1000493	B1E3B15	1000556	B1E4B15	1000619
	16	B1E1B16	1000431	B1E2B16	1000494	B1E3B16	1000557	B1E4B16	1000620
	20	B1E1B20	1000432	B1E2B20	1000495	B1E3B20	1000558	B1E4B20	1000621
	25	B1E1B25	1000433	B1E2B25	1000496	B1E3B25	1000559	B1E4B25	1000622
	30	B1E1B30	1000434	B1E2B30	1000497	B1E3B30	1000560	B1E4B30	1000623
	32	B1E1B32	1000435	B1E2B32	1000498	B1E3B32	1000561	B1E4B32	1000624
35	B1E1B35	1000436	B1E2B35	1000499	B1E3B35	1000562	B1E4B35	1000625	
40	B1E1B40	1000437	B1E2B40	1000500	B1E3B40	1000563	B1E4B40	1000626	
50	B1E1B50	1000438	B1E2B50	1000501	B1E3B50	1000564	B1E4B50	1000627	
60	B1E1B60	1000439	B1E2B60	1000502	B1E3B60	1000565	B1E4B60	1000628	
63	B1E1B63	1000440	B1E2B63	1000503	B1E3B63	1000566	B1E4B63	1000629	
<b>C Curve (5~10In)</b>	1	B1E1C1	1000441	B1E2C1	1000504	B1E3C1	1000567	B1E4C1	1000630
	1.6	B1E1C1.6	1000442	B1E2C1.6	1000505	B1E3C1.6	1000568	B1E4C1.6	1000631
	2	B1E1C2	1000443	B1E2C2	1000506	B1E3C2	1000569	B1E4C2	1000632
	3	B1E1C3	1000444	B1E2C3	1000507	B1E3C3	1000570	B1E4C3	1000633
	4	B1E1C4	1000445	B1E2C4	1000508	B1E3C4	1000571	B1E4C4	1000634
	5	B1E1C5	1000446	B1E2C5	1000509	B1E3C5	1000572	B1E4C5	1000635
	6	B1E1C6	1000447	B1E2C6	1000510	B1E3C6	1000573	B1E4C6	1000636
	8	B1E1C8	1000448	B1E2C8	1000511	B1E3C8	1000574	B1E4C8	1000637
	10	B1E1C10	1000449	B1E2C10	1000512	B1E3C10	1000575	B1E4C10	1000638
	13	B1E1C13	1000450	B1E2C13	1000513	B1E3C13	1000576	B1E4C13	1000639
	15	B1E1C15	1000451	B1E2C15	1000514	B1E3C15	1000577	B1E4C15	1000640
	16	B1E1C16	1000452	B1E2C16	1000515	B1E3C16	1000578	B1E4C16	1000641
	20	B1E1C20	1000453	B1E2C20	1000516	B1E3C20	1000579	B1E4C20	1000642
	25	B1E1C25	1000454	B1E2C25	1000517	B1E3C25	1000580	B1E4C25	1000643
	30	B1E1C30	1000455	B1E2C30	1000518	B1E3C30	1000581	B1E4C30	1000644
	32	B1E1C32	1000456	B1E2C32	1000519	B1E3C32	1000582	B1E4C32	1000645
35	B1E1C35	1000457	B1E2C35	1000520	B1E3C35	1000583	B1E4C35	1000646	
40	B1E1C40	1000458	B1E2C40	1000521	B1E3C40	1000584	B1E4C40	1000647	
50	B1E1C50	1000459	B1E2C50	1000522	B1E3C50	1000585	B1E4C50	1000648	
60	B1E1C60	1000460	B1E2C60	1000523	B1E3C60	1000586	B1E4C60	1000649	
63	B1E1C63	1000461	B1E2C63	1000524	B1E3C63	1000587	B1E4C63	1000650	

For accessories, see pages B32-34.

## Supplementary Protectors

### B1E UL 1077 480Y/277 Vac 5 kA



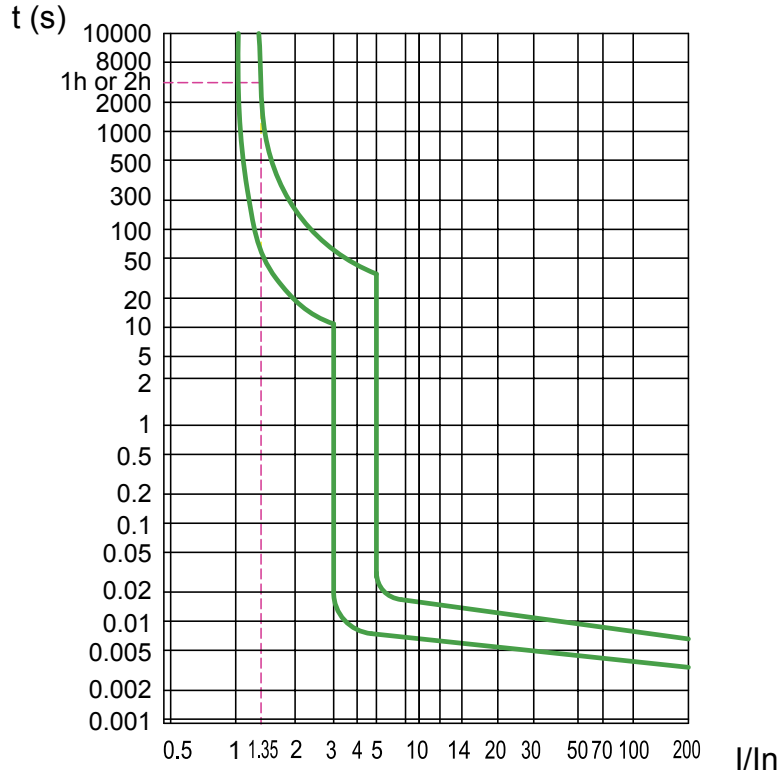
Rated Amperage	1 Pole - 277V		2 Poles - 480V		3 Poles - 480V		4 Poles - 480V		
	Product	Part Number	Product	Part Number	Product	Part Number	Product	Part Number	
D Curve (10~14In)	1	B1E1D1	1000462	B1E2D1	1000525	B1E3D1	1000588	B1E4D1	1000651
	1.6	B1E1D1.6	1000463	B1E2D1.6	1000526	B1E3D1.6	1000589	B1E4D1.6	1000652
	2	B1E1D2	1000464	B1E2D2	1000527	B1E3D2	1000590	B1E4D2	1000653
	3	B1E1D3	1000465	B1E2D3	1000528	B1E3D3	1000591	B1E4D3	1000654
	4	B1E1D4	1000466	B1E2D4	1000529	B1E3D4	1000592	B1E4D4	1000655
	5	B1E1D5	1000467	B1E2D5	1000530	B1E3D5	1000593	B1E4D5	1000656
	6	B1E1D6	1000468	B1E2D6	1000531	B1E3D6	1000594	B1E4D6	1000657
	8	B1E1D8	1000469	B1E2D8	1000532	B1E3D8	1000595	B1E4D8	1000658
	10	B1E1D10	1000470	B1E2D10	1000533	B1E3D10	1000596	B1E4D10	1000659
	13	B1E1D13	1000471	B1E2D13	1000534	B1E3D13	1000597	B1E4D13	1000660
	15	B1E1D15	1000472	B1E2D15	1000535	B1E3D15	1000598	B1E4D15	1000661
	16	B1E1D16	1000473	B1E2D16	1000536	B1E3D16	1000599	B1E4D16	1000662
	20	B1E1D20	1000474	B1E2D20	1000537	B1E3D20	1000600	B1E4D20	1000663
	25	B1E1D25	1000475	B1E2D25	1000538	B1E3D25	1000601	B1E4D25	1000664
	30	B1E1D30	1000476	B1E2D30	1000539	B1E3D30	1000602	B1E4D30	1000665
	32	B1E1D32	1000477	B1E2D32	1000540	B1E3D32	1000603	B1E4D32	1000666
35	B1E1D35	1000478	B1E2D35	1000541	B1E3D35	1000604	B1E4D35	1000667	
40	B1E1D40	1000479	B1E2D40	1000542	B1E3D40	1000605	B1E4D40	1000668	
50	B1E1D50	1000480	B1E2D50	1000543	B1E3D50	1000606	B1E4D50	1000669	
60	B1E1D60	1000481	B1E2D60	1000544	B1E3D60	1000607	B1E4D60	1000670	
63	B1E1D63	1000482	B1E2D63	1000545	B1E3D63	1000608	B1E4D63	1000671	

For accessories, see pages B32-34.

# Supplementary Protectors

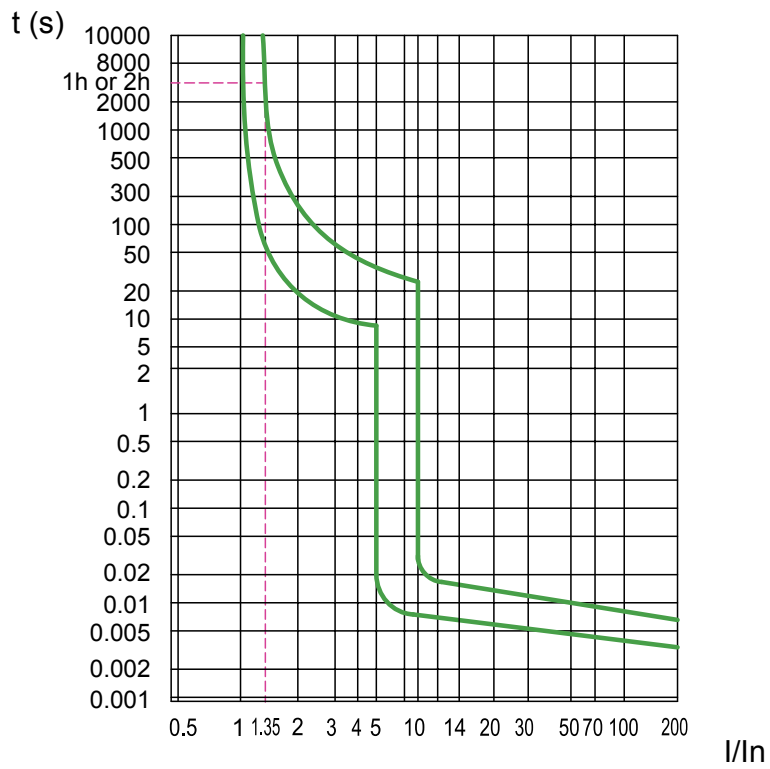
## UL 1077 Trip Curves

**B Curve**  
(3~5 In)



B

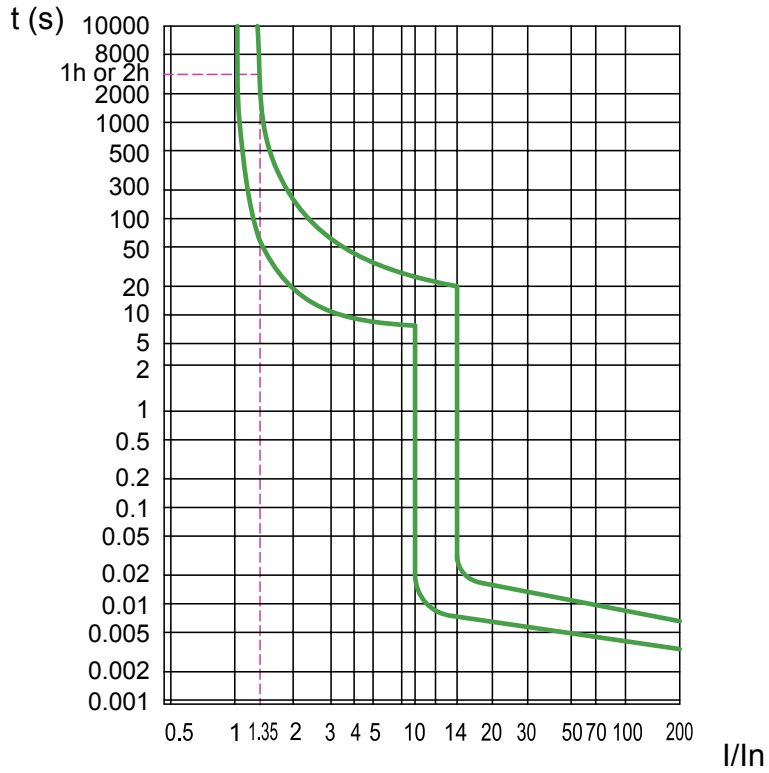
**C Curve**  
(5~10 In)



## Supplementary Protectors

### UL 1077 Trip Curves

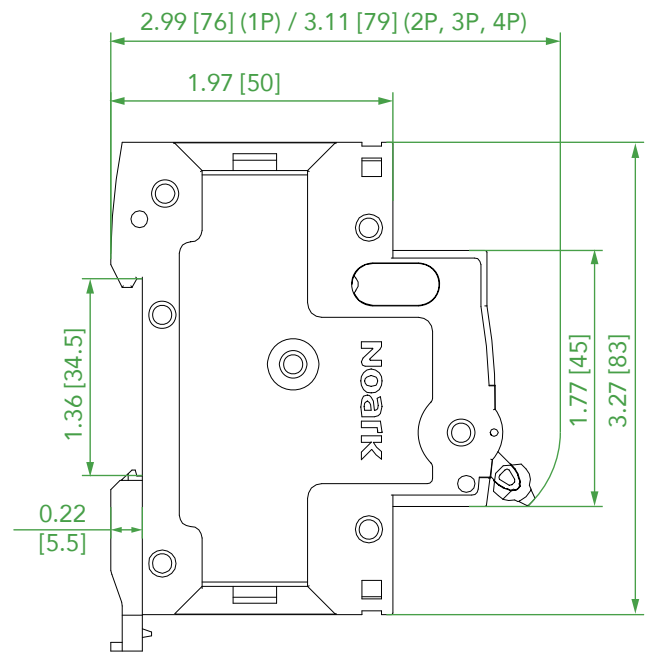
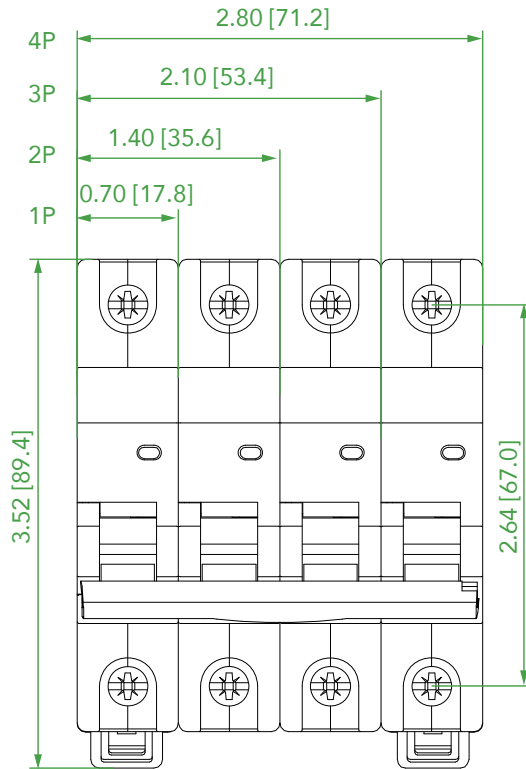
**D Curve**  
(10~14 In)



# Supplementary Protectors

## UL 1077 Dimensions

**B1E**  
 1P/2P/3P/4P  
 Unit: in. [mm]



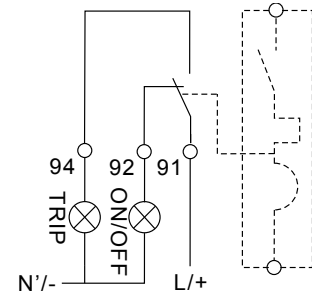
B

## Supplementary Protectors

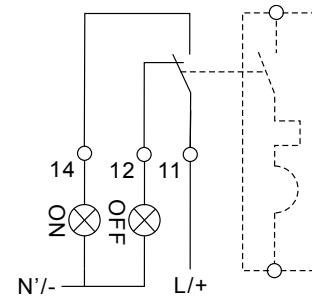
### UL 1077 Accessories: Alarm Switch, Auxiliary Contact



<b>AL31</b>	<b>11</b>	<b>U</b>
<b>Description</b>	<b>Auxiliary Contact</b>	<b>Device Category</b>
Alarm Switch	11: 1NO+1NC	U: UL 1077
<b>Accessory Description</b>	<b>Product</b>	<b>Part Number</b>
Alarm Switch	AL3111U	1001216



<b>AX31</b>	<b>11</b>	<b>U</b>
<b>Description</b>	<b>Auxiliary Contact</b>	<b>Device Category</b>
Auxiliary Contact	11: 1NO+1NC	U: UL 1077
<b>Accessory Description</b>	<b>Product</b>	<b>Part Number</b>
Auxiliary Contact	AX3111U	1001215



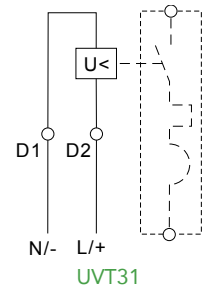
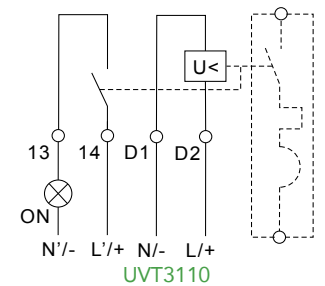
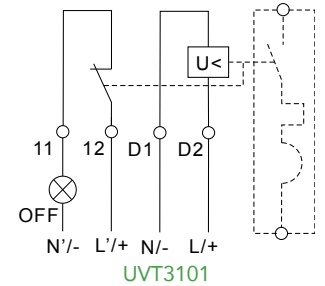
# Supplementary Protectors

## UL 1077 Accessories: Under-Voltage and Shunt Trip



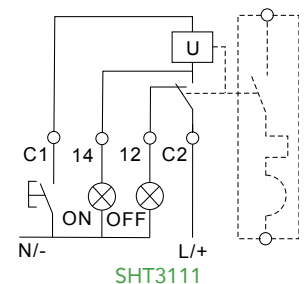
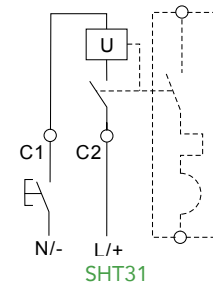
<b>UVT31</b>	<b>01</b>	<b>U</b>	<b>A</b>
<b>Description</b>	<b>Auxiliary Contact</b>	<b>Device Category</b>	<b>Rated Voltage</b>
Under-Voltage Trip	01: 1NC	U: UL 1077	A: 240 Vac
	10: 1NO		B: 48 Vac/dc
	Blank: No auxiliary contact		

Accessory Description	Product	Part Number	
Under-Voltage Trip	1NC / 240Vac	UVT3101UA	1001217
	1NC / 48Vac/dc	UVT3101UB	1001218
	1NO / 240Vac	UVT3110UA	1001219
	1NO / 48Vac/dc	UVT3110UB	1001220
	240Vac	UVT31UA	1001221
	48Vac/dc	UVT31UB	1001222



<b>SHT31</b>	<b>11</b>	<b>U</b>	<b>A</b>
<b>Description</b>	<b>Auxiliary Contact</b>	<b>Device Category</b>	<b>Rated Voltage</b>
Shunt Trip	11: 1NO+1NC	U: UL 1077	A: 110-415 Vac, 110-130 Vdc
	Blank: No auxiliary contact		B: 48 Vac/dc
			C: 12-24 Vac/dc

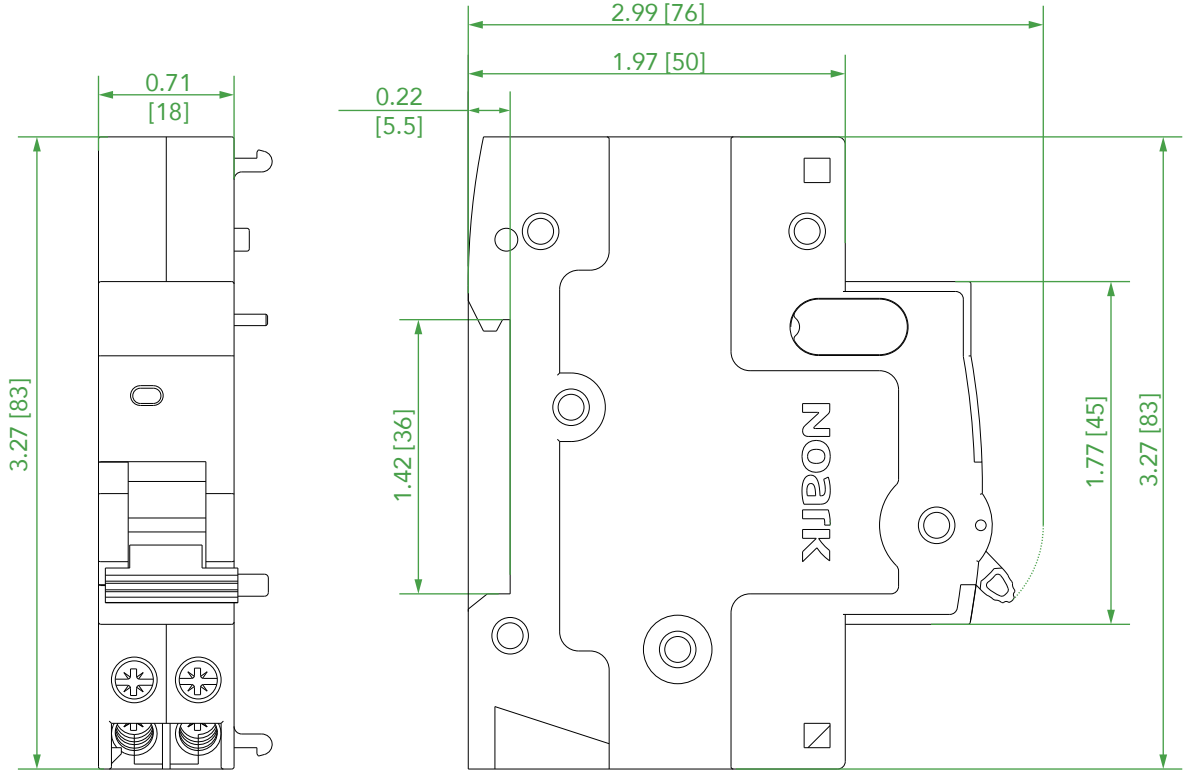
Accessory Description	Product	Part Number	
Shunt Trip	1NO+1NC 110-415 Vac/110-130 Vdc	SHT3111UA	1001223
	1NO+1NC 48-60 Vac/dc	SHT3111UB	1001224
	1NO+1NC 12-24 Vac/dc	SHT3111UC	1001225
	110-415 Vac/110-130 Vdc	SHT31UA	1001226
	48-60 Vac/dc	SHT31UB	1001227
	12-24 Vac/dc	SHT31UC	1001228



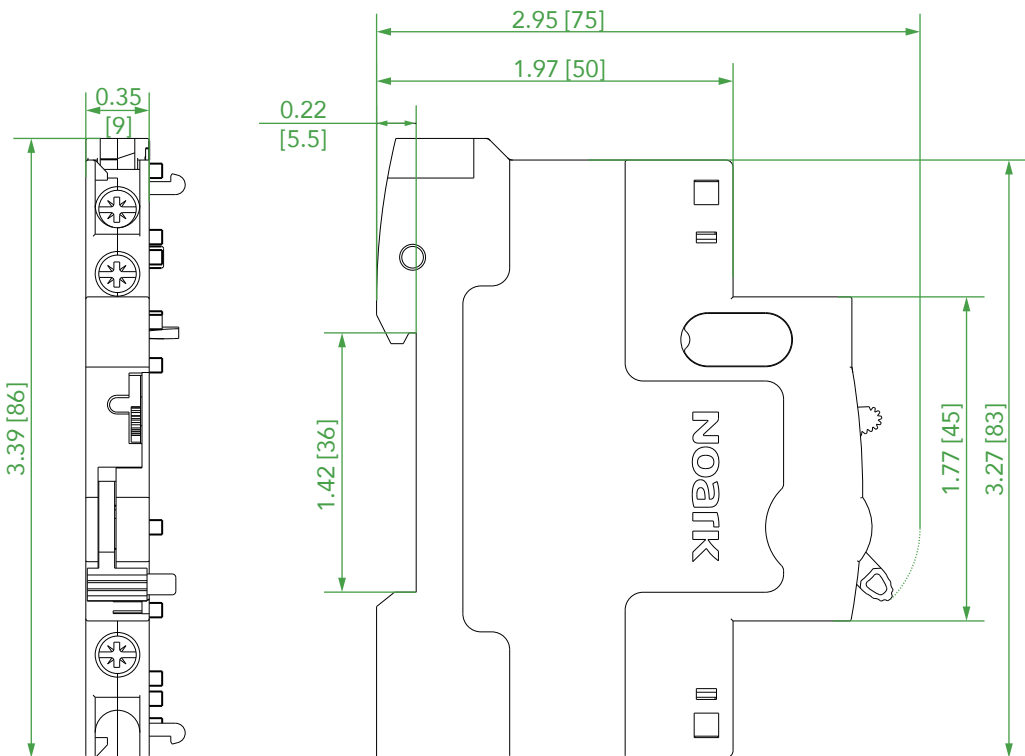
B

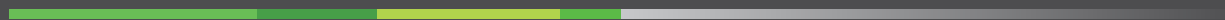
## Supplementary Protectors UL 1077 Accessory Dimensions

UVT31U  
UVT3101U  
UVT3110U  
SHT31U  
SHT3111U  
Unit: in. [mm]



AL3111U  
AX3111U  
Unit: in. [mm]





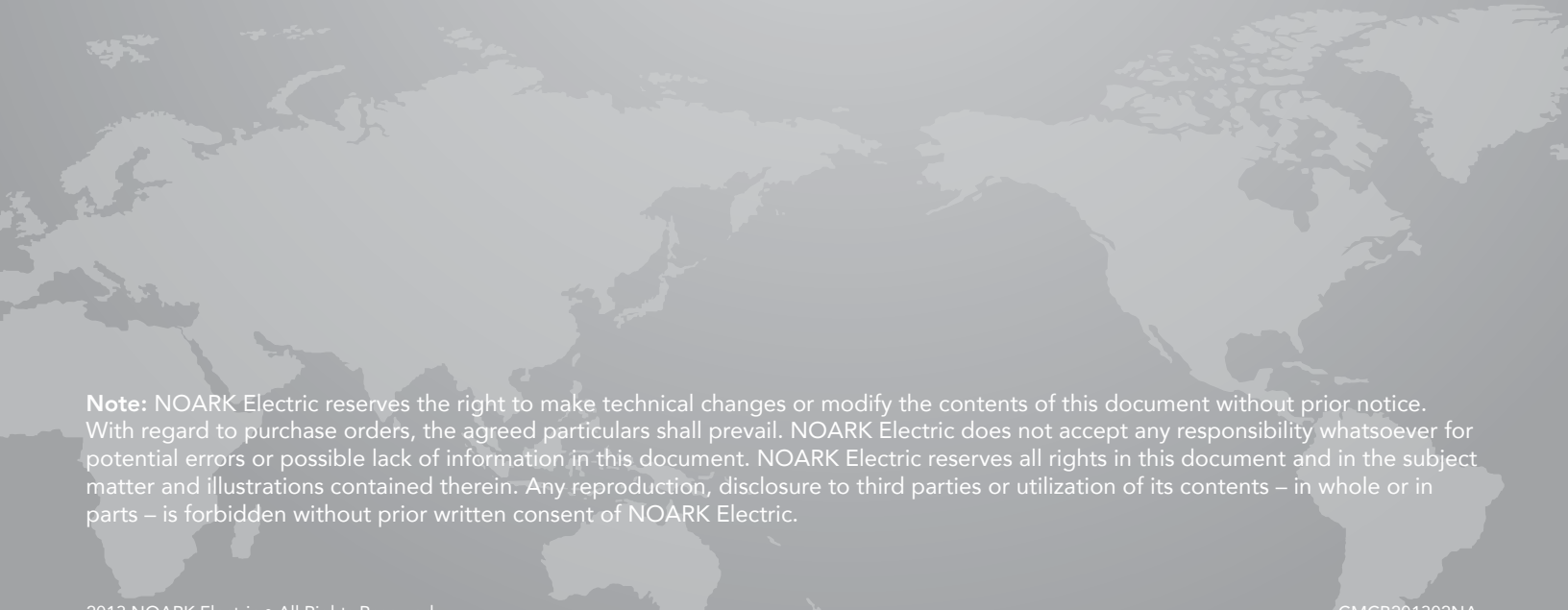
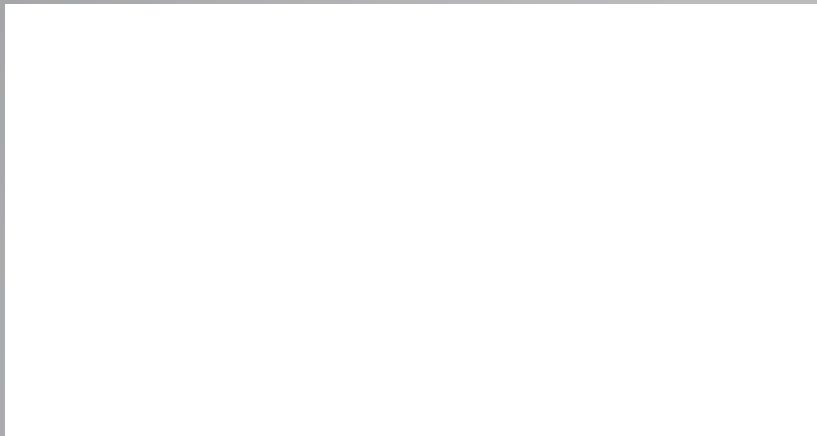
# NOARK



**NOARK Electric North America**

(414) 304-8189

[www.NoarkUSA.com](http://www.NoarkUSA.com) • [NASales@Noark-Electric.com](mailto:NASales@Noark-Electric.com)



**Note:** NOARK Electric reserves the right to make technical changes or modify the contents of this document without prior notice. With regard to purchase orders, the agreed particulars shall prevail. NOARK Electric does not accept any responsibility whatsoever for potential errors or possible lack of information in this document. NOARK Electric reserves all rights in this document and in the subject matter and illustrations contained therein. Any reproduction, disclosure to third parties or utilization of its contents – in whole or in parts – is forbidden without prior written consent of NOARK Electric.